



Part Number
Key Word



Site Search

TOP

NEWS RELEASE

CONNECTOR SEARCH

CATALOG

SAMPLE

STOCK CHECK

[TOP](#) > [FI-TWE21P-VF-E1400](#)

Product List

Product Name	FI-TWE21P-VF-E1400
Series Name	FI Series
Contact spacing (mm)	1.25
Number of rows	2
Number of Contacts	21
Lead free	Yes
Connector type	Board side Receptacle
PCB mounting type	Standard type
PCB mounting method	Solder (SMT)
Wire termination method	-
Applicable wire	-
Finish of contact in connecting area	Gold over Nickel

Finish of contact in terminal area	-
Finish of contact in PCB mounting area	Gold over Nickel
Material of housing	Glass-filled LCP (UL94V-0)
PCB side connector styles	Straight
PCB mounted height (mm)	4
Electro magnetic shield function	Yes
Remarks	With heat resisting tape, Embossed-taped supply (1400 pieces/reel)
Related Documents	 161Kbytes  131Kbytes
Pair	

Notice:

1. The values specified in this web site are only for reference. The products and their specifications are subject to change without notice. Contact our sales staff for further information before considering or ordering any of our products.
For purchase, a product specification must be agreed upon.
2. Users are requested to provide protection circuits and redundancy circuits to ensure safety of the equipment, and sufficiently review the suitability of JAE's products to the equipment.
3. The products presented in this web site are designed for the uses recommended below. We strongly suggest you contact our sales staff when considering use of any of the products in any other way than the recommended applications or for a specific use that requires an extremely high reliability.

(1) Applications that require consultation:

- (i) Please contact us if you are considering use involving a quality assurance program that you specify or that is peculiar to the industry, such as:
Automotive electrical components, train control, telecommunications devices (mainline), traffic light control, electric power, combustion control, fire prevention or security systems, disaster evention equipment, etc.
- (ii) We may separately give you our support with a quality assurance program that
you specify, when you think of a use such as :

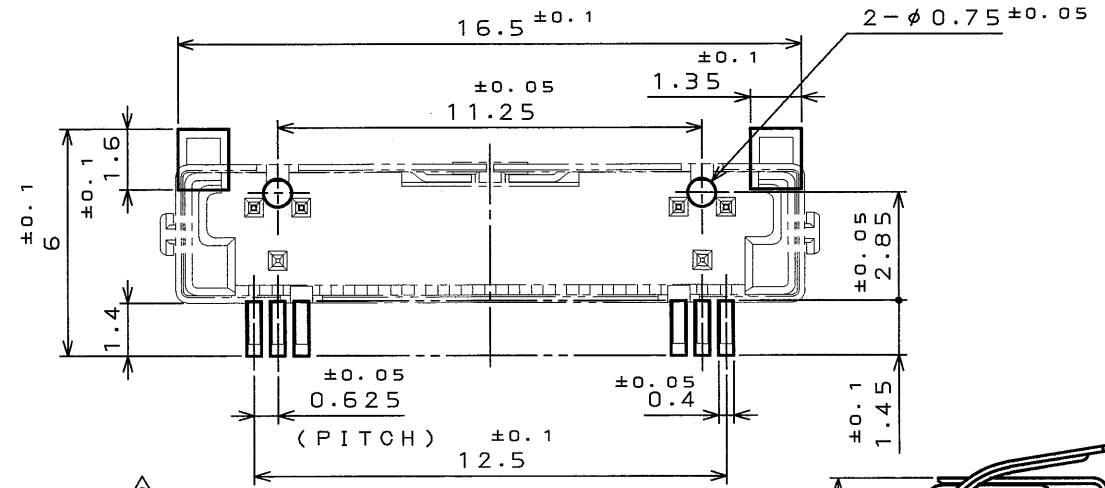
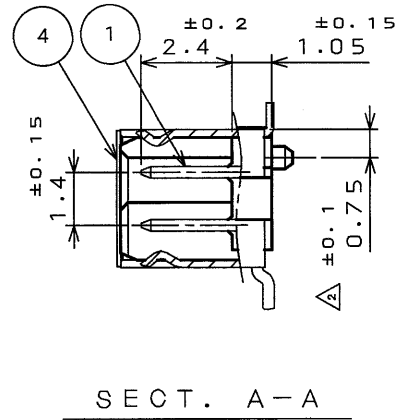
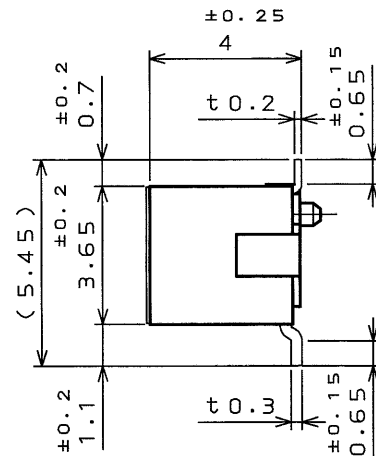
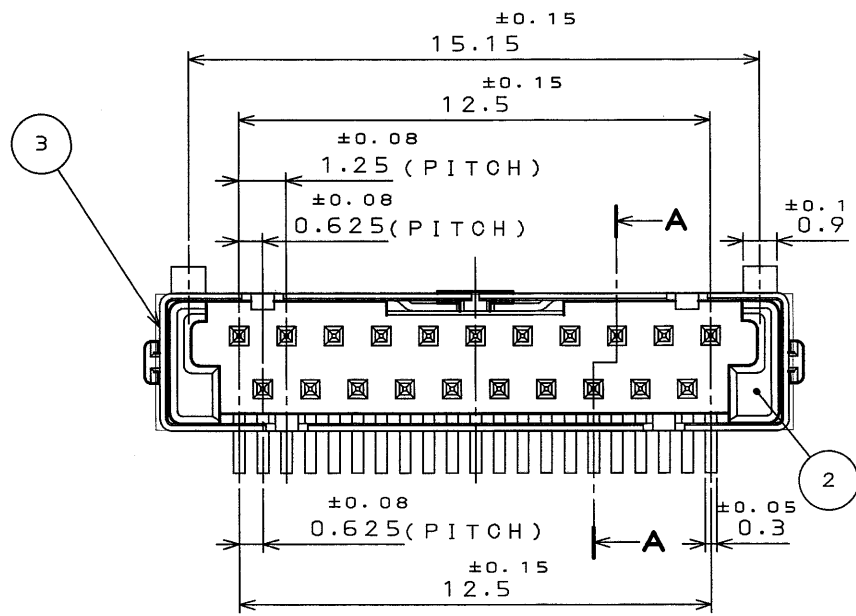
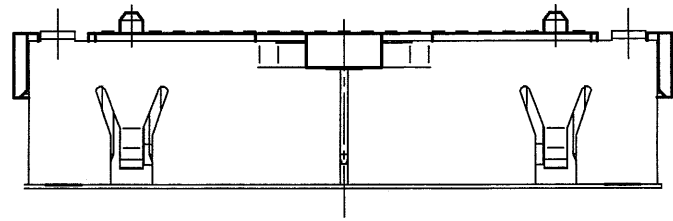
Aviation or space equipment, submarine repeaters, nuclear power control systems, medical equipment for life support, etc.

(2) Recommended applications include:

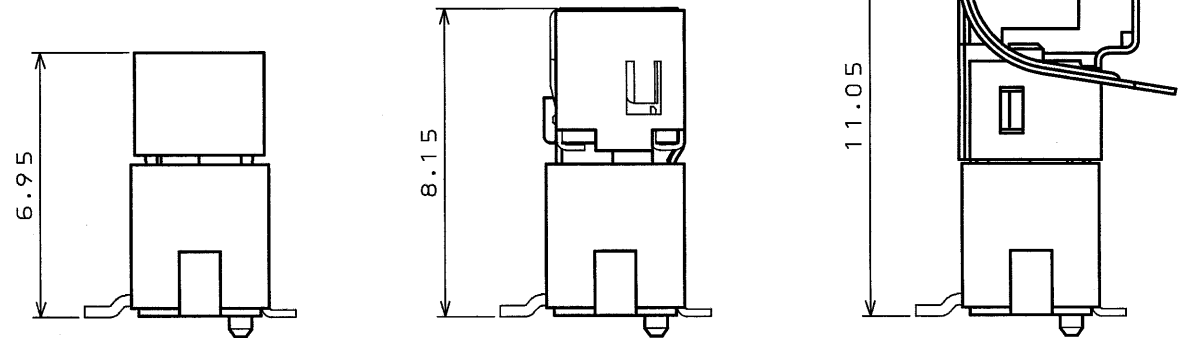
Computers, office appliances, telecommunications devices (terminals, mobile units), measuring equipment, audiovisual equipment, home electric appliances, factory automation equipment, etc

SJ031731
(DRAWING NO.)

版数 REV.	年月日 DATE	DCN NO.	変更内容 DESCRIPTION	製図 DR.	担当 CHK.	査閲 APPD.	承認 APPD.
2	30.May.1997	40130	ADD BOSS TYPE ボス付品追加		K.HAYASHI	H.AMEMIYA	T.MORINO
3	31.Mar.1999	43822	ADDED STAMP(COMPANY LOGO "JAE") 刻印(社標)追加	M.TANAKA	M.KIKUCHI	K.HISATOMI	H.AMEMIYA
4	18.Apr.2002	49883	CORRECTED INSULATOR MATERIAL インシュレータ材料訂正		M.KIKUCHI	A.KIMURA	H.AMEMIYA
5	24.Jun.2003	52359	CORRECTED SHELL PLATING SPECIFICATION シェルメッキ仕様訂正	M.TANAKA	M.KIKUCHI	A.Kimura	Yoshizawa



△ APPLICABLE P.C.B. DIMENSION (REF.)
適合基板寸法(参考)



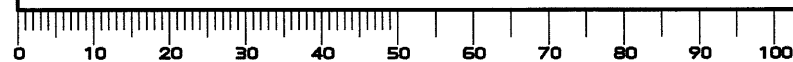
(A) FI-W21S (SJ030619) (B) FI-WE21MV (SJ033187) (C) FI-WE21HS (SJ030636)
(CRIMP TYPE WITHOUT SHELL) (FPC RELAY TYPE WITH SHELL) (CRIMP TYPE WITH SHELL)

△ MATED CONDITION (REF.)
嵌合状態図(参考)

符号 NO.	名称 DESCRIPTION	個数 QTY.	材料 MATERIAL	仕上 FINISH	備考 REMARKS
4	HEAT RESISTING TAPE	1	PI.		t0.05
3	SHELL	1	COPPER ALLOY	TIN PLATING △	
2	INSULATOR	1	GLASS FILLED LCP △		UL94V-0 BLACK
1	CONTACT	21	COPPER ALLOY	GOLD OVER NICKEL	
仕様書 (SPECIFICATION)		第1版 (ORIGINAL DATE) 27.Mar.1997		尺貫(SCALE) シーケツト(S) 5:1	
公差 (GENERAL TOLERANCE)		製図 DR.		名称 (TITLE)	
寸法 (DIMENSION)		担当 CHK. K.HAYASHI		FI-TWE21P*-VF	
角度 (ANGLES)		査閲 APPD. H.AMEMIYA		重量 (WEIGHT)	
. ±0.8		承認 APPD. H.FUJINO		△	
.X ±0.4				図面番号 (DRAWING NO.)	
.XX ±0.1				SJ031731	
.XXX ±				版数 (REV.)	

△ NOTE 1. WITHOUT BOSS: FI-TWE21P-VF
WITH BOSS: FI-TWE21PB-VF
△ 1. ボス無し品名: FI-TWE21P-VF
ボス有り品名: FI-TWE21PB-VF

DOF-C-212D(98.02)



CDS-97-180-10085
SIZE A3